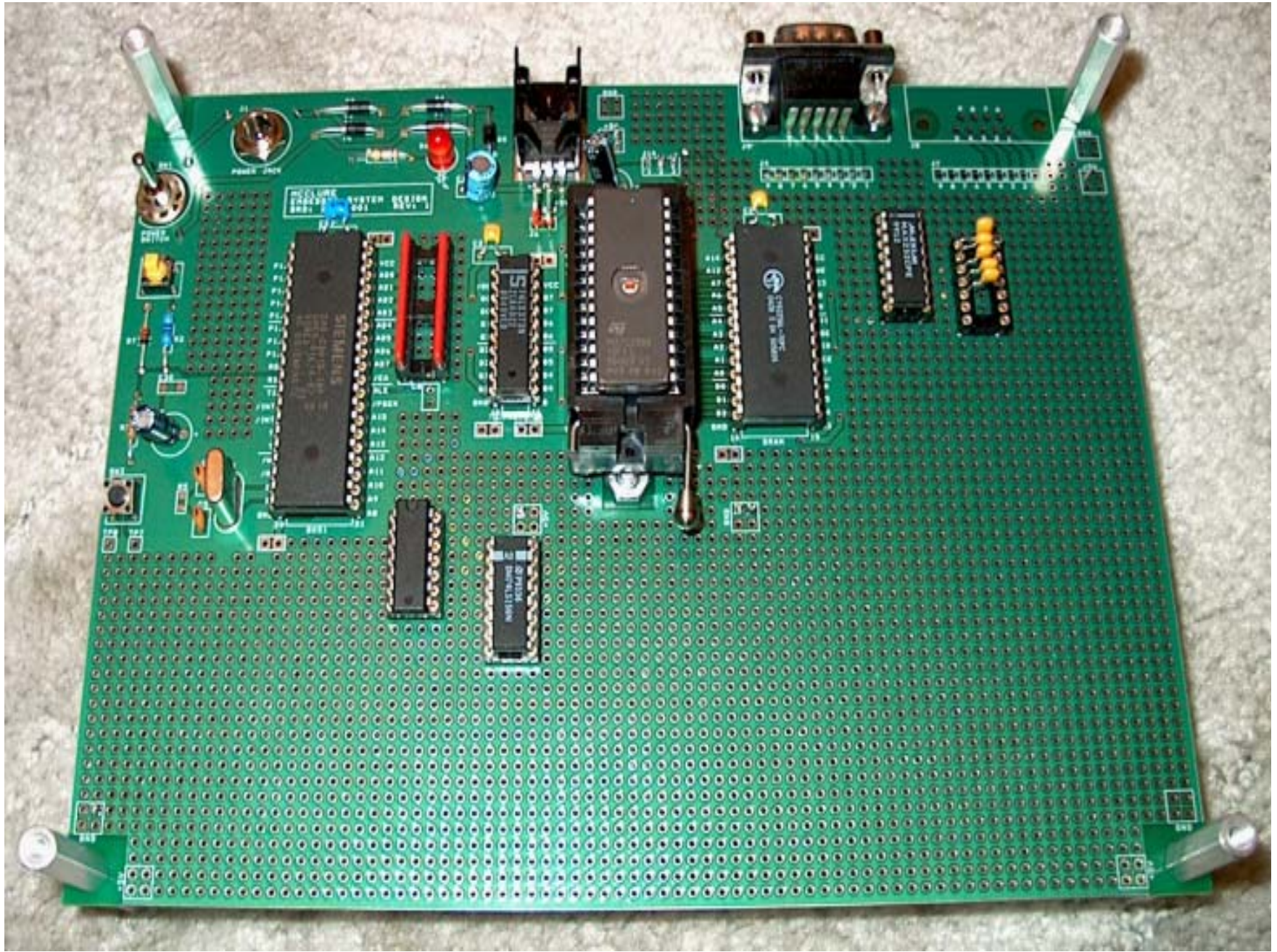


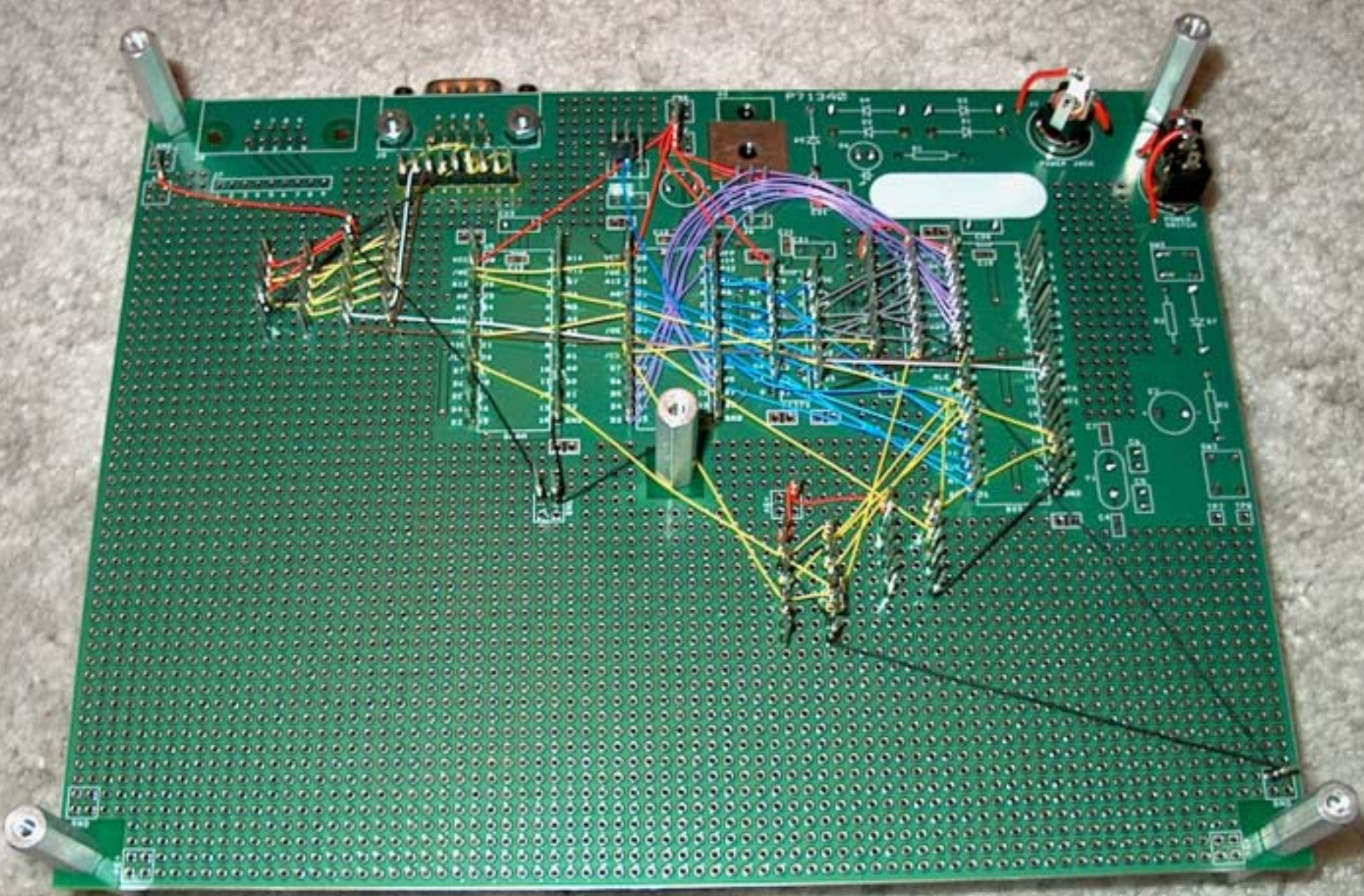
Embedded System Design Development Board

A PCB designed to support embedded system laboratory experiments utilizing the 8051 processor and peripherals

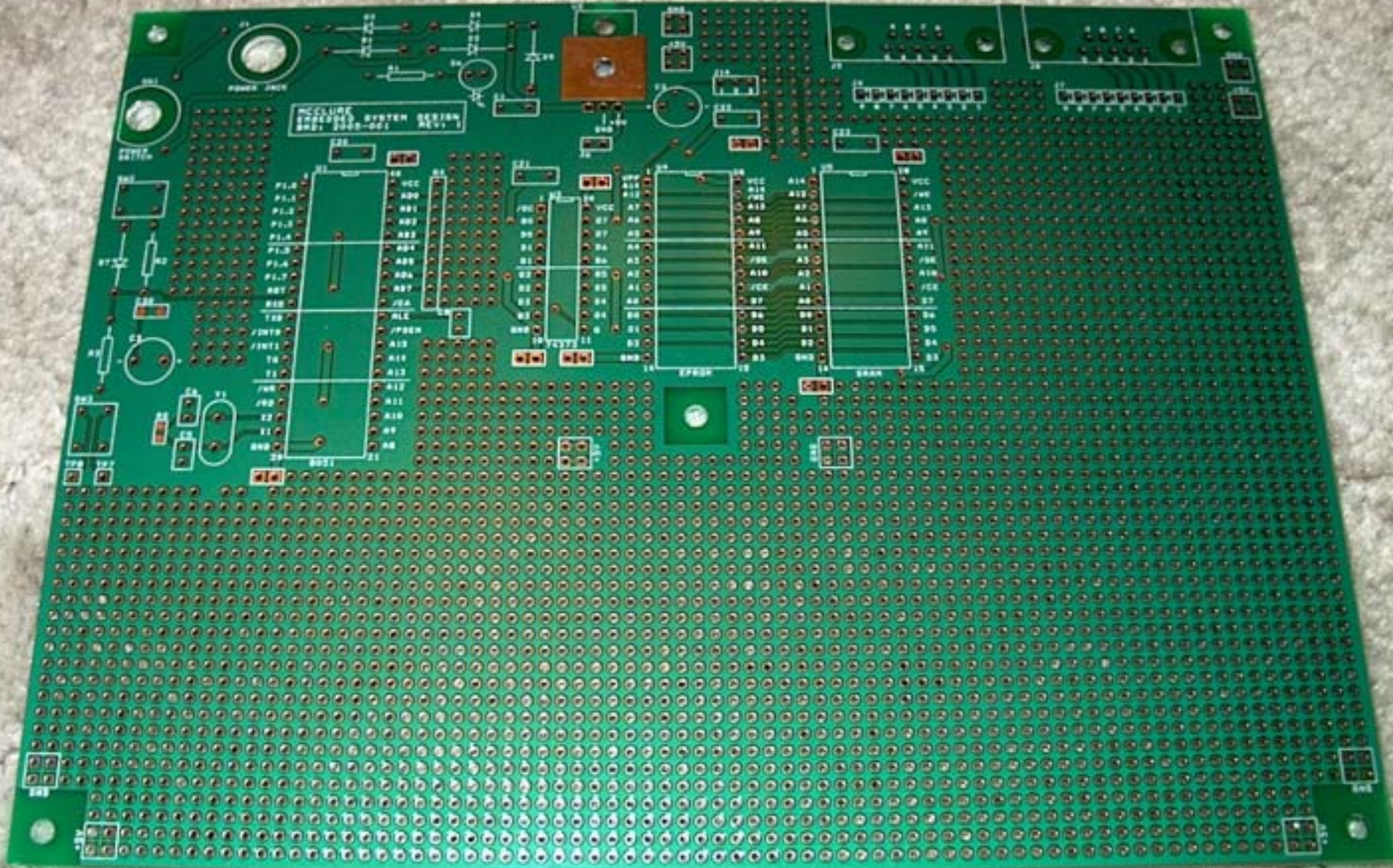
ECEN 5613 PCA TOP SIDE



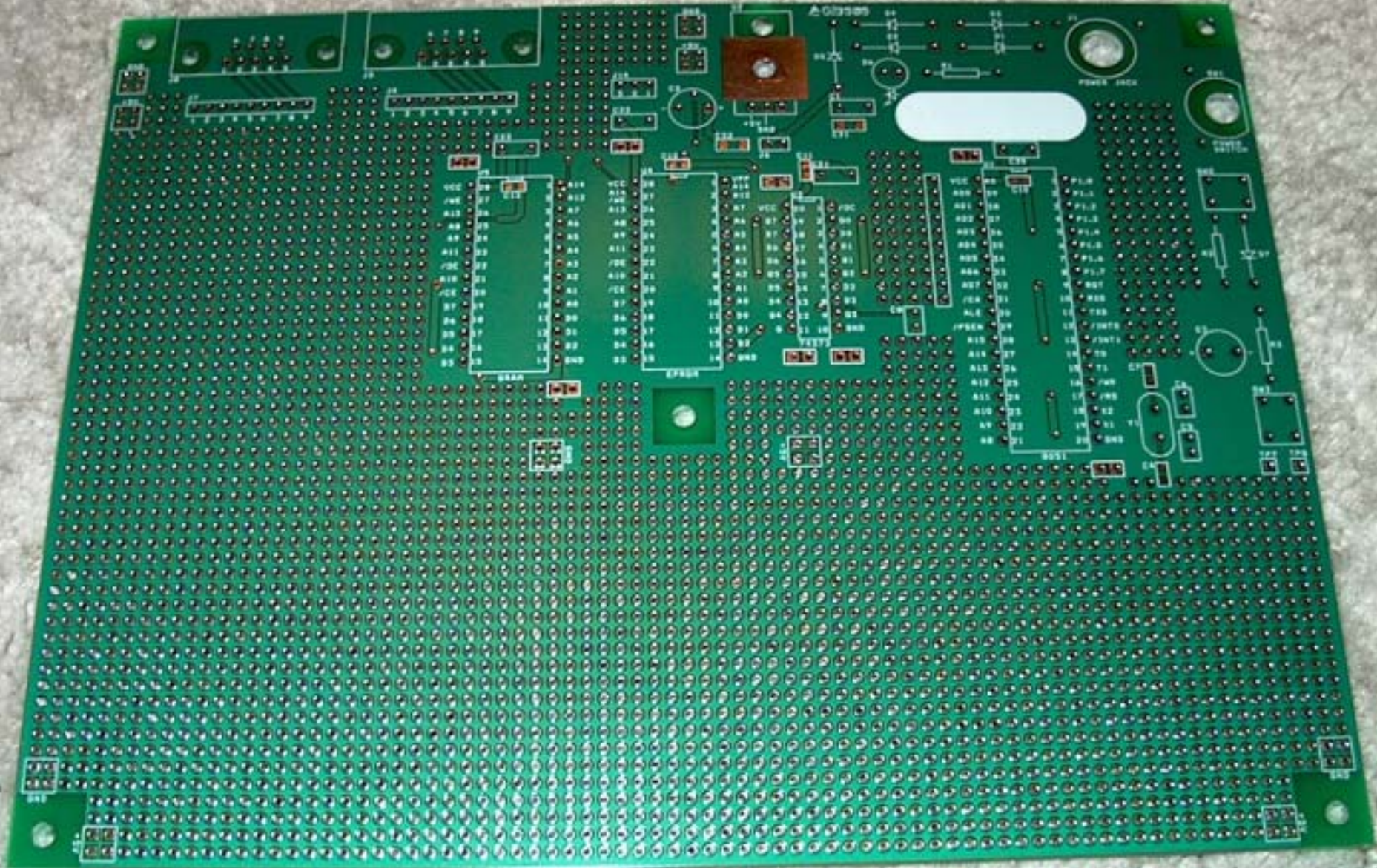
ECEN 5613 PCA BOTTOM SIDE



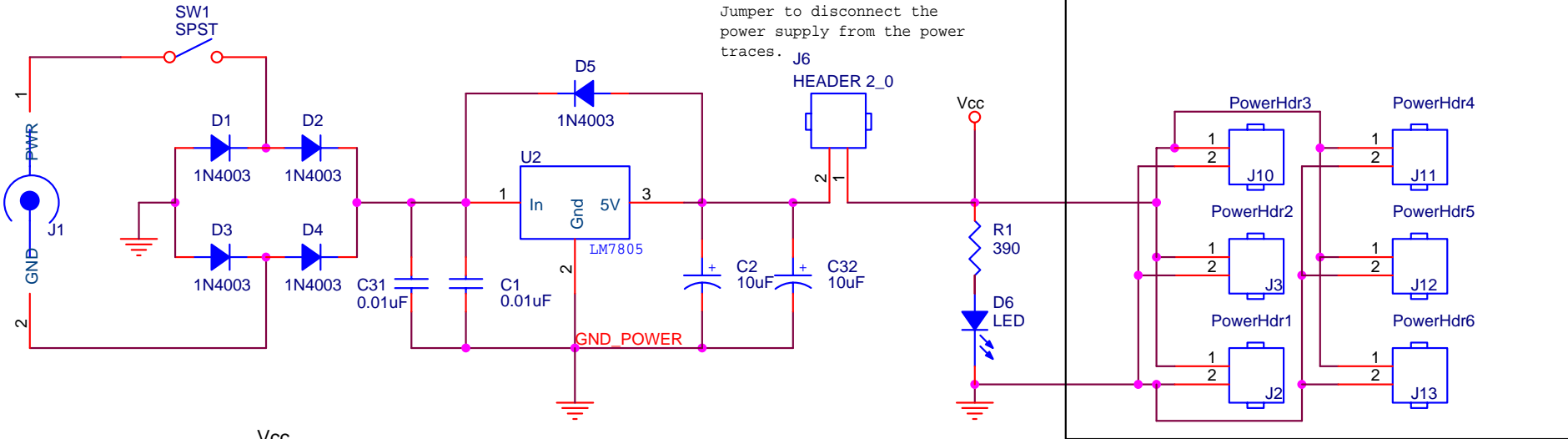
ECEN 5613 PCB TOP SIDE



ECEN 5613 PCB BOTTOM SIDE

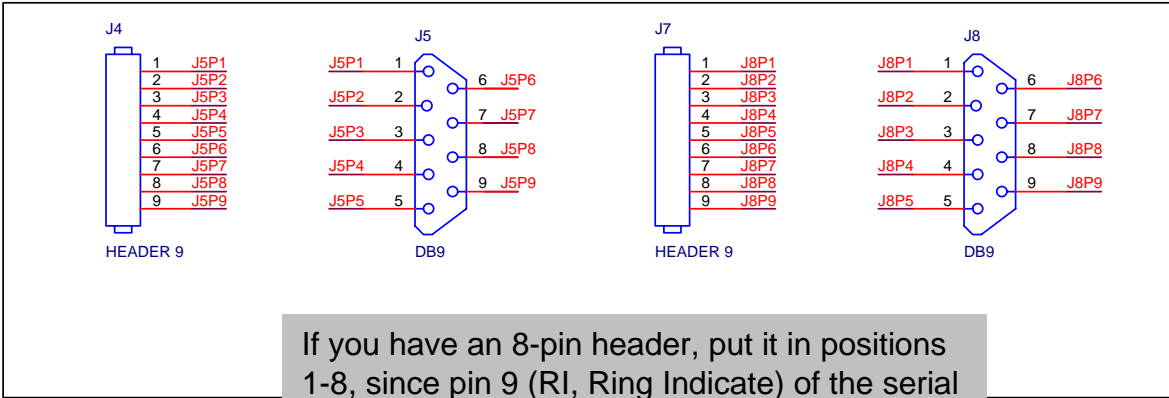
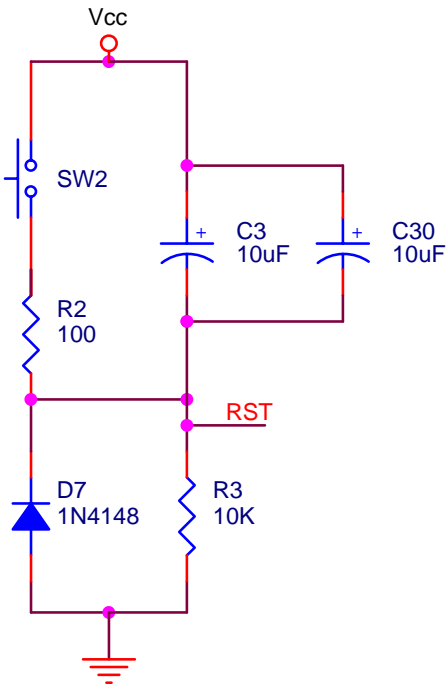


ECEN 5613 PCB Partial Schematic



An ammeter may be put in series between the two pins of J6 in order to measure the 5V current drawn by the board. If not using a header, just solder a wire between the two pads of J6.

If you don't have a resistor, just short across the pads for R2



If you have an 8-pin header, put it in positions 1-8, since pin 9 (RI, Ring Indicate) of the serial connector is not used for this course.